

# LAND & SEA

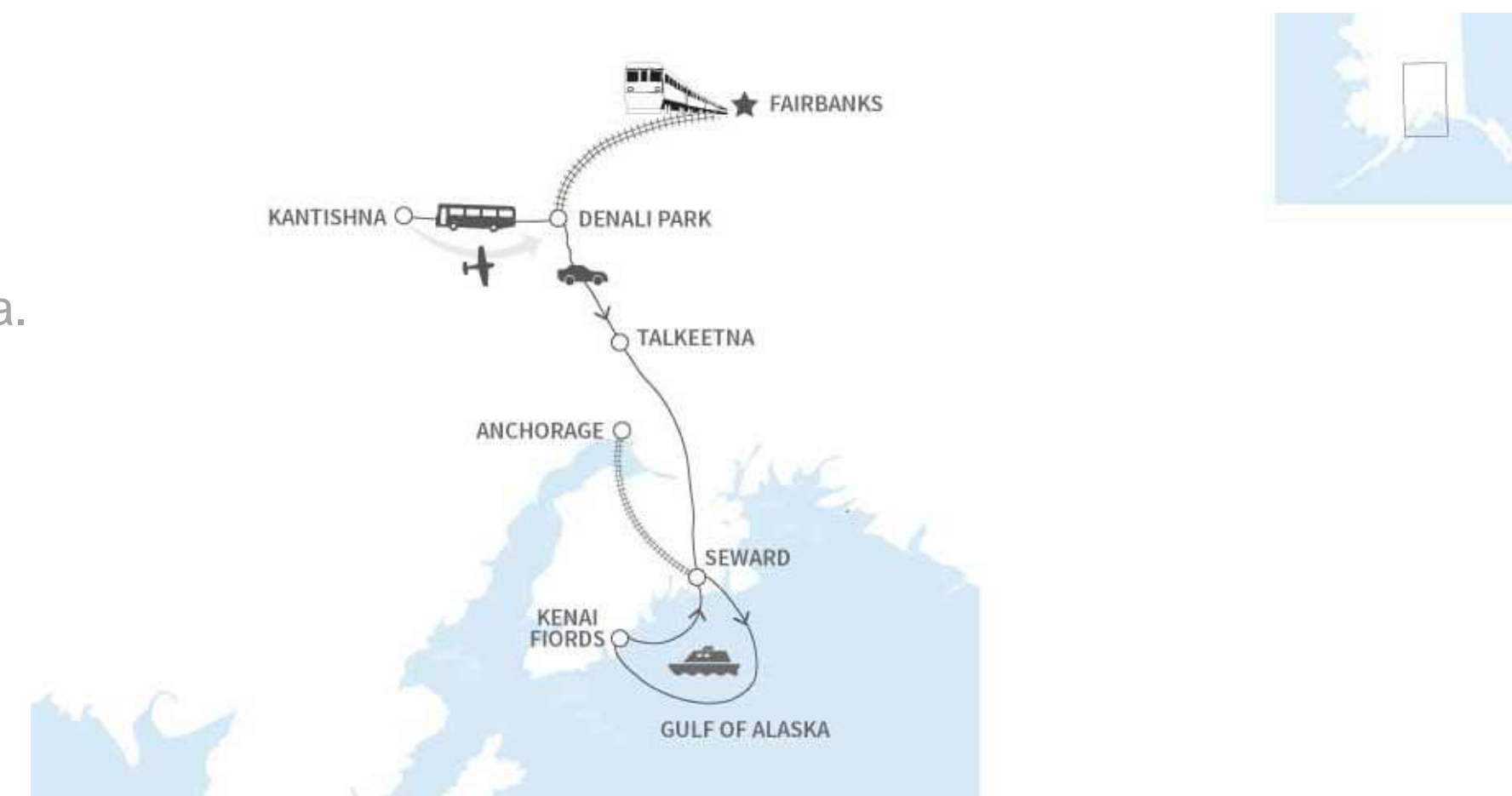
This trip will introduce you to both interior and coastal Alaska. Highlights include the train journey to Denali National Park aboard the luxurious Alaska Railroad GoldStar dome train, a flightseeing journey over Denali, and cruising among the glaciers of Kenai Fjords National Park.

# OUR PROMISE

While in our care you'll receive 24/7 support and the flawless delivery of your travel experience. We obsess over every detail so that you don't have to. Your journey is bespoke, created just for you. All that's left for you to do is to enjoy Alaska – it is wild, soulful and truly unforgettable.

## ITINERARY AT A GLANCE

This trip will introduce you to both interior and coastal Alaska. Highlights include the train journey to Denali National Park aboard the luxurious Alaska Railroad GoldStar dome train, a flightseeing journey over Denali, and cruising among the glaciers of Kenai Fjords National Park. View quintessential terrain and wildlife on land, while time in the fjords could see you spot orca, humpback and gray whales, plus sea otters, harbor seals, and more.

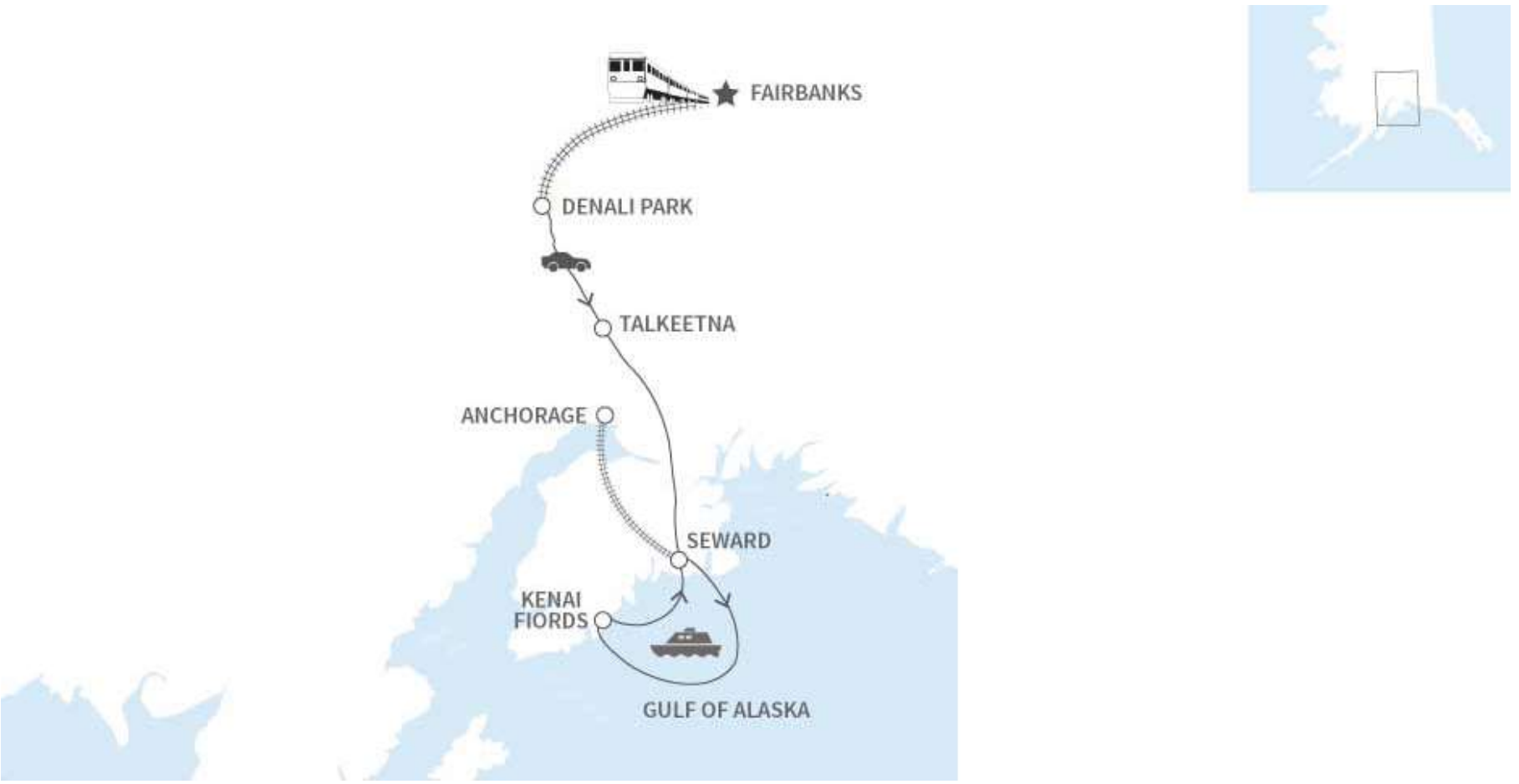


| DAYS         |  |
|--------------|--|
| ONE          | Arrive in Fairbanks   Afternoon at leisure   Accommodations are at the Fairbanks Springhill Suites by Marriott   |
| TWO          | Travel from Fairbanks to Denali via Alaska Railroad's GoldStar dome train   Explore Denali National Park   Accommodations are at the North Face Lodge                        |
| THREE - FOUR | Explore Denali National Park independently or with naturalist guides   Accommodations are at the North Face Lodge  |
| FIVE         | Travel by plane to Denali Park entrance   Private SUV to Talkeetna   Accommodations are at Talkeetna Alaskan Lodge   |
| SIX          | Travel from Talkeetna to Seward   Ride the Alyeska tram   Visit the Alaskan Wildlife Conservation Center   Accommodations are at the Seward Windsong Lodge                   |
| SEVEN        | Boat cruise from Seward Harbour to Fox Island   Accommodations are at the Kenai Fjords Wilderness Lodge  |
| EIGHT        | Day at leisure   Accommodations are at the Kenai Fjords Wilderness Lodge   |
| NINE         | Boat cruise through Kenai Fjords National Park ending in Seward   Alaska Railway GoldStar dome train from Seward to Anchorage   Accommodations are at the Hotel Captain Cook |



## ITINERARY AT A GLANCE

This trip will introduce you to both interior and coastal Alaska. Highlights include the train journey to Denali National Park aboard the luxurious Alaska Railroad GoldStar dome train, a flightseeing journey over Denali, and cruising among the glaciers of Kenai Fjords National Park. View quintessential terrain and wildlife on land, while time in the fjords will see you possibly spot orca, humpback and gray whales, plus sea otters, harbor seals, Dall's porpoise, and sea lions.



### DAYS

TEN Private transfer from hotel to Anchorage International Airport | End of journey



## DAY ONE

### Arrive in Fairbanks | Explore Fairbanks & Surrounding Area

Upon your arrival at the airport in Fairbanks, you will take a courtesy shuttle to your hotel. Take a walk, have some dinner, and settle in for a good night's sleep; we'll make it an early start tomorrow. Accommodations are at the Fairbanks Springhill Suites by Marriott.

#### HIGHLIGHTS

Exploring Fairbanks on your own

#### MEALS

n/a

#### SERVICES

Shuttle transfer

#### HOTEL

Fairbanks Springhill Suites by Marriott

## DAY TWO

### Travel from Fairbanks to Denali

Following another jaunt in the hotel shuttle, you'll depart Fairbanks aboard the Alaska Railroad GoldStar dome train, bound for Denali National Park. From the open-air platform or covered observation deck, you'll soak up views of tundra and mountains. Arriving at Denali Park entrance, meet the North Face Lodge bus for your 90-mile trip into the heart of Denali. Watch for black bear, moose, Dall sheep, wolves, and more as you journey into the Park. Accommodations are at North Face Lodge, in a Lodge Room.

#### HIGHLIGHTS

Scenic rail journey from Fairbanks to Denali

#### MEALS

Breakfast, Lunch & Dinner

#### SERVICES

Shuttle transfer | Train transfer | Bus transfer

#### HOTEL

North Face Lodge



## DAYS THREE - FOUR

### Explore Denali National Park

Apart from enjoying views of Denali (on clear days) and six other major peaks, your two days at North Face Lodge will afford you opportunities for independent adventures or naturalist-guided excursions. Hike, bike along the park road, fish for Arctic grayling or Mackinaw trout, paddle a canoe along Wonder Lake, observe unique birdlife, and photograph Denali bathed in alpenglow. Accommodations are at North Face Lodge, in a Lodge Room.

#### HIGHLIGHTS

Exploring Denali National Park on your own, or with expert guides

MEALS  
SERVICES  
HOTEL

Breakfast, Lunch & Dinner  
Optional Guides  
North Face Lodge

## DAY FIVE

### Denali Flight Adventure | Travel from Denali to Talkeetna

Mid-morning, meet your pilot for your scenic flight to the park entrance. You'll soar through the awe-inspiring Alaska Range, over glaciers, and to the North Face of Denali. At the Park entrance, your personal driver will transport you to Talkeetna along one of the most scenic portions of the Parks Highway, with a stop for a short hike and picnic en route. Accommodations are at the Talkeetna Alaskan Lodge, in a Mountainside Room.

#### HIGHLIGHTS

Soaring over Denali during your flight to the park's entrance | Scenic journey to Talkeetna

MEALS  
SERVICES  
HOTEL

Breakfast & Lunch  
Flight transfer | Private SUV transfer  
Talkeetna Alaskan Lodge



## DAY SIX

### Travel from Talkeetna to Seward

A private drive will transport you to Seward via the Parks and Seward highways. The drive offers the scenery that defines Alaska’s splendor: tundra and muskeg, towering peaks, glaciers and lush forests. Stops along the way include taking an aerial tram to the summit of Mt. Alyeska,, and a visit to the Alaska Wildlife Conservation Center to view wildlife up close. Accommodations are at the Seward Windsong Lodge, in a Standard Room.

|            |  |
|------------|--|
| HIGHLIGHTS | Mt. Alyeska tram ride   Visiting wildlife at Alaska Wildlife Conservation Center |
| MEALS      | n/a  |
| SERVICES   | Private SUV transfer   |
| HOTEL      | Seward Windsong Lodge  |

## DAY SEVEN

### Travel from Seward to Fox Bay

From Seward Harbor, you will board a vessel to cruise the calm, protected waters of Resurrection Bay. This forty-five-minute cruise will deliver you to your next lodge—located on the remote Fox Island. En route, look for Steller sea lions, sea otters, Dall’s porpoises, humpback and orca whales, bald eagles, puffins, and other birdlife. Accommodations are at the Kenai Fjords Wilderness Lodge, in a Cabin.

|            |  |
|------------|--|
| HIGHLIGHTS | The scenic boat journey through the Kenai Fjords |
| MEALS      | Lunch & Dinner                                   |
| SERVICES   | Boat transfer                                    |
| HOTEL      | Kenai Fjords Wilderness Ldodge                   |



## DAY EIGHT

### Explore Fox Island

From the Lodge, sea kayak on protected waters, hike, or explore the coastline in a motorized skiff. Alternatively, join an interpretive walk, learning about the fascinating history of the island and beachcomb along miles of pristine pebble beaches. Wildlife sightings may include harbor seals, sea and river otters, black bears, bald eagles, and a multitude of bird life. Accommodations are at the Kenai Fjords Wilderness Lodge, in a Cabin.

|            |   |
|------------|---|
| HIGHLIGHTS | Spotting wildlife as you explore Fox Island by boat and on foot |
| MEALS      | Breakfast, Lunch & Dinner                                       |
| SERVICES   | Optional Guides   |
| HOTEL      | Kenai Fjords Wilderness Lodge                                   |

## DAY NINE

### Tour the Northwestern Fjords | Travel to Anchorage

On your final day at Fox Island, you will depart on the Northwestern Fjords Tour where you will be taken deep into the national park for a stunning view of the Northwestern Fjord glaciers. The tour will end in Seward; there, you will catch the Alaska Railroad dome train ride to Anchorage—a perfect opportunity to have dinner while gazing out the dining room’s picture windows. Accommodations are at Hotel Captain Cook, in a Junior Suite.

|            |   |
|------------|---|
| HIGHLIGHTS | Kenai Fjords National Park   Northwestern Fjords glaciers                   |
| MEALS      | Breakfast, Lunch & Dinner   |
| SERVICES   | Full-Day Guide   Shuttle transfer   train transfer   Private Sedan transfer |
| HOTEL      | Hotel Captain Cook  |



## DAY TEN

### Travel to Anchorage International Airport

Your driver will transport you from your hotel back to the Anchorage airport in time for your return flight. Safe travels!

|            |                        |
|------------|------------------------|
| HIGHLIGHTS | n/a                    |
| MEALS      | n/a                    |
| SERVICES   | Private Sedan transfer |
| HOTEL      | n/a                    |



# ACCOMMODATION



## North Face Lodge

### Denali National Park, AK

Situated on a tundra meadow in the Moose Creek Valley, the inn boasts fine views of the crests of Denali and six other major peaks of the Alaska Range. It is one of only a few accommodations within Denali National Park. Each day, guests are given options of hikes and outings to explore the lodge's surrounding environment. Naturalist-guided trips range from a level-ground "foray" to a moderate or strenuous hike in the park's backcountry. Because of grandfathered-in rights, the staff at North Face Lodge can drive farther into the park than staff at other accommodations and have canoes for exploring Wonder Lake.



## Talkeetna Alaskan Lodge

### Talkeetna, AK

Set on a ridge above the small community of Talkeetna on the south side of Denali, the Talkeetna Alaskan Lodge offers unforgettable views of Denali and the Alaska Range. The 212 guest rooms are complemented by two restaurants, a bar, a business center, and a spacious lobby featuring a 46-foot river rock fireplace. The seasonal, four-diamond property, which is located two and a half hours north of Anchorage, rests on 35 acres and comprises eight buildings: a main lodge, five guest lodges, employee housing, and a maintenance facility.

#### About This Property

This Alaskan lodge offers a variety of unique cabins, varying in size and bed type.

#### Room View

Denali & the Alaskan Range

**Room Size** 364 sq. ft

**Bed Type** One King or two Queen beds

# ACCOMMODATION



## Seward Windsong Lodge

### Seward, AK

This moderate lodge is located just three miles north of the Seward Small Boat Harbor, nestled in a glacial river valley next to the Resurrection River. Close to downtown Seward, yet in a secluded setting, the lodge is surrounded by picturesque mountains. It offers 180 guest rooms, each with a flat screen television, wireless internet access, full private bath, DVD player, hair dryer, coffee maker, and telephone. There is also an onsite restaurant and lounge.

#### Room View

Mountain

#### Bed Type

Two Queen beds



## Kenai Fjords Wilderness Lodge

### Fox Island, AK

The Kenai Fjords Wilderness Lodge on Fox Island offers a high quality, remote island experience. Your stay at the exclusive lodge includes all meals, accommodations, and a Kenai Fjords National Park cruise. Just 12 miles south of Seward, Fox Island is located in a 24-mile-long estuary extending from the mouth of the Resurrection River to Harding Gateway and Blying Sound. It is defined by towering sculpted cliffs along the northern shore and craggy outcroppings to the west. The Lodge is solar- and wind-powered, and each of its eight cabins comes with private bathroom with shower. In lieu of phones, TVs, and radios, the Lodge offers plenty of peace and quiet.

#### Room View

Lagoon or Resurrection Bay

#### Bed Type

One Queen bed and one Sofa bed

# ACCOMMODATION



## Hotel Captain Cook Anchorage, AK

Arguably the only luxury hotel in Anchorage, and boasting downtown's only four-diamond restaurant, the Captain Cook offers top service and accommodations for international travelers. Three restaurants, an athletic club, and a full business center complement the 547 guest rooms. Perhaps the best features of the centrally-located hotel are its panoramic views of Cook Inlet, the Chugach Mountains, the Anchorage cityscape, and Denali.

### Room View

Bay or mountain.

**Bed Type** One King bed

We Look Forward to Serving **You**

---



**T:** 604.408.1099 | **TF:** 888 999 6556 | **w:** [entreedestinations.com](http://entreedestinations.com)

**F:** 604.736.2242 | **E:** [alaska@entreedestinations.com](mailto:alaska@entreedestinations.com)

7th Floor, 134 Abbott Street, Vancouver, BC, V6B 2K4